

September 2014

Central Peninsula Garden Club



PO Box 767 · Kenai, Alaska 99611 · www.cenpengardenclub.org

The Great Garden Clean UP! and What to Do About It...

Board Members

President & Program Chair & Newsletter— Marion Nelson

Vice president—Renae Wall

Secretary—Kay Gardner

Treasurer—Peggy Morris

Plant sale Chair, Director & Historian—Cathy Haas

Director & Hospitality Chair—Juanita Owens

Director & Tech & Sea Ag Committee Chair—Don St. John

Director & Publicity—Velma Bittick

Director & Special Events Chair—Cindy Barnes

Director, Special Events—Don Thompson

Director, Special Events—Lee Bowman

What do you do in your gardens and growing areas?

Some people clean out everything possible, turn the soil, and add amendments, others let their end-of-season plant material lay on the ground as mulch or put plant items right into their soil as a form of lasagna gardening.

On the 9th, the program panel of local gardeners live in different parts of our Central Peninsula area and grow a wide variety of plants in gardens, tunnels and greenhouses. They will share what they do and why and of course we'll have Q & A with input from all levels of expertise in the room. It never ceases to amaze me how many knowledgeable gardeners are present and how willing they are to share their knowledge. That's gardeners for ya!



This is always a fun meeting, as we get together again for the fall and compare notes and dirt digging war stories.

Date: Tuesday September 9th, Time: 7pm

Free and open to the public. Refreshments and sometimes door prizes.

**Location: Cook Inlet Aquaculture Bldg.-lower level meeting room
Mile 16.5 K-Beach Rd, not far from the Bridge Access intersection.**

Memberships are half price for the remainder of 2014,
\$10 for individual, \$15 for family.

End of Gardening Season by Jane Misner

Darrell and I work our heated greenhouse from February to October or November each year. So, we haven't really begun to shut down that space. When we do finish harvesting in there we will haul the containers of dirt to the cold frame, dump them in it and wash out the containers to be ready for planting in them again next season. I usually wash down the walls of the greenhouse and we sweep out the area as seems fit.

If I am able, I will start a winter lettuce and herb garden this year. That will need to be started in September to sprout and establish before the darkness discourages their growth. We'll see.

The cold frame will be stripped of vegetables as each plant completes its production. We have pulled the broccoli, cabbages, cauliflower and most lettuces earlier. We uproot and toss plant refuse into our compost pile. We have discovered root maggots in the dirt after removing some of these plants, cabbages especially. We have applied a dose of coffee grounds to those holes. That may prove effective for next season; we don't know. We have also tamped cups of grounds into mouse tunnels in the cold frame. We do feel that has been successful, as no new tunnels have been discovered. Don't really know why. But I'm happy as I don't like sharing my cauliflower with the mice.

We have netting that hangs down from the ceiling of our cold frame that serves as hanging trellis for beans, peas and cucumbers. Those require a bit of handiwork to remove remnants of leaf and stem from fish web, a chore that isn't enjoyed by either of us. Once it's done, Darrell raises the whole net up high enough to allow tractor tilling of the whole garden. We've planted a few herbs- dill and cilantro- near the walls so they can escape the harshest effects of the tilling. Other vegetables take advantage of the harsh tossing of dirt. Pak choi, tomatoes, dill and arugula have all volunteered this past year in any bare ground across the cold frame's acreage. We even had volunteer peas that came up (conveniently for them) along the length of the netting amongst the cucumbers. I was impressed by their ingenuity.



Misner's beans climb up and around on netting.

This summer we will try another pest control that I knew about last year and failed to exercise. I'd heard from Marion Nelson that ammonia diluted with water could be sprayed liberally over areas that slugs nested. I've regretted not doing that last season and our garden showed their increase this summer. Once all the vegetables are out this season we will do a 50/50 mix sprayed over the slug infested areas. After the dirt from the greenhouse has been added to the cold frame, Darrell will run the small tractor/ tiller through the cold frame garden. Finally we'll finish off with the extra dose of ammonia over the whole garden space and close the doors till next spring.

Our orchard demands very little attention at season's end. We have harvested most of the apples. After the last are collected and a good frost has dropped most leaves, we'll rake and collect leaves from that space. We have left leaves in the past but mice nesting in leaves ringed a couple of our apple trees at the root. We hope to avoid that from now on. We believe the clean up will reduce the moth reproduction as well. We have been plagued by caterpillars; this was our first crop of apples for three years.

(Jane and Darrell Misner live off the grid in the Coho area. Their productive greenhouse has in-floor heating as does their home. They put down their cement greenhouse pad a short distance from the house during construction and built up on it later. Their main energy source is solar and they grow some of the most mouth watering tomatoes.)

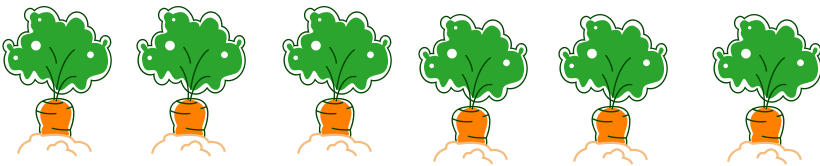
Produce and Post Holes

by Pat Udelhoven

Week of August 18th. Our garden could use a little watering, glad to see it sprinkle but I may still have to give it a drink. I made up 12 lbs. of kraut and some vanilla and mint extract, just to try something new. I should have enough cabbage to get another 12 lbs. plus put up. The ground cherries I tried and liked from our tour stop at Mark White's last summer, are a little messy to pick up. Hopefully I will come up with a way to combat that! Cathy Haas got the ones that taste more like a strawberry cross I got the ones that taste more like pineapple. Quite a difference between the two and they both work really well in salsa. Everyone likes to snack on them but me, go figure.

We have most of our winter wood in now and worked on some for next year only because it was on the ground and too wet for this winter's use. Sometimes I think I am too old for this but then I am grateful I can still do it. We had to redo some gates and fence posts with the help of a rented post hole digger and our son who helped muscle them around. My husband, Dave, had cut them in half when we bought them which we both loaded into our truck. Ugh! And they had to be buried 4' so the post hole digger was a good idea. Who knew telephone poles could be so darn heavy! I guess it's all a good reason to get out of bed in the morning..... now if I had the good sense to go to bed at a decent time!

(Pat Udelhoven is a night owl, super gardener, former CPGC board member and club volunteer.)



Burger Bus



OPEN YEAR ROUND

Monday—Saturday

11am to 6pm

CLOSED SUNDAY



Memorial for Lydia Clayton

Food Bank lunch room
September 9, 5-7:30 pm

Bring a story, a picture, a memory,
some finger foods to share and
meet with other community
members to celebrate Lydia's time
with us here on the Kenai Peninsula
and her generous life.

Come for a while or
stay for as long as you like.

Lydia was a positive force for small
farmers, home gardeners, local
foods, local markets and more.

We will miss her laugh and energy.

—Janice Chumley



Got a story or photos to share?

Contact Marion Nelson, 283-4632 or
mmkn@ptialaska.net

Advertising space available at very
reasonable prices!

Check out the club's Face Book page!

Newsletter layout by Becky Holloway and Pam Voeller

Dig Deeper: Mysteries in the Soil Poster Contest

The Kenai Soil & Water Conservation District is happy to announce a poster contest open to students in grades K-12 in Nikiski, Kenai, Soldotna, Sterling, Kasilof and Clam Gulch. The theme of this local, state, and national contest, "Dig Deeper: Mysteries in the Soil," gets kids learning and thinking about the living world beneath our feet.

The contest is co-sponsored by the *Central Peninsula Garden Club*, Kenai Watershed Forum, 4-H/Cooperative Extension Service and NRCS.

First prize winners in each age category (K-1st, 2nd-3rd, 4th-6th, 7th-9th, 10th-12th) win \$50 and the chance to compete in the state-level competition. Second place in each age group wins \$30, and third place wins \$20.

Posters are due September 30, 2014 and may be dropped off at any of the following locations:

- Kenai Watershed Forum -- 44129 Sterling Highway, Soldotna
- 4-H/Cooperative Extension Office -- 43961 K-Beach Road
- Kenai Soil & Water Conservation District --110 Trading Bay, Suite 160, Kenai

Download contest rules, learning resources, and entry form at www.kenaisoilandwater.org <<http://www.kenaisoilandwater.org>> . Good luck!



August 11th Garden Tour in Soldotna and Ridgeway

Marcia Dietrich Kardatzke tells about her many cement block raised beds and attractive, productive octagonal greenhouse located in Soldotna.

Marcia's cabbage in her nice cement block raised beds. Note their seating cap for easier maintenance.



photos by Elizabeth Dietrich

...more August 11th
Garden Tour photos

Marcia and tour goes inside her octagonal greenhouse. This is her first year in this greenhouse and growing in her raised beds.

Next stop, **Steve & Cheryl Beeson's** greenhouse and new high tunnel.



Johnny's Seeds "Lunchbox Pepper Mix" growing in Beeson's hydroponic greenhouse along with other peppers, tomatoes and more.



Johnny's Seeds Trinity Bicolor and Ed Hume Early Sunglow corn is reaching the top of Beeson's high tunnel. CPGC member, Bruce King is over 6 ft. and so is the corn!

**Refreshing Libations
for Your Next
Garden Party!**



Country Liquor
140 S. Willow St.
Downtown Kenai
283-7651

Beeson's stand of corn in their new high tunnel.



CPGC board member, Renae Wall stands by the Lilly Miller or Ferry-Morse Jack O'Lantern pumpkins in Beeson's new high tunnel. Both seed packets say the same thing but one came up and the other didn't and Cheryl is not sure which one is which. Seeds purchased locally. Net slings are holding up the pumpkins due to their weight!



<p>KENAI FEED & SUPPLY www.kenaifeed.com MILE 14.5 K-Beach Rd. 907-283-1929</p> 	<p>HIGH TUNNELS ORGANIC FERTILIZER PEAT + SEEDS FENCING LIVETOCK & PET FEED/SUPPLIES PRODUCE</p>	
---	---	---

Upcoming CPGC Events & Volunteer Opportunities!

It's your club.....Jump in and help with a committee or event! It's fun.

Most are just once a year events. Sign ups available at the Sept 9th meeting.

- Newsletter:** Editor, or share pictures, articles on local gardening topics.. Contact Marion mmkn@ptialaska.net
- Event booth staffing & decorating:** Home Show in April, Ninilchik Fair in August. Contact Cindy Barnes, alaskancindy-lou@yahoo.com or 262-1395
- Workshop Weekends in May.** Arranging workshops, presenters, and venues. Contact Marion mmkn@ptialaska.net
- Program Committee:** Meets occasionally. Contact Marion, mmkn@ptialaska.net
- Publicity Volunteer:** Email publicity information to the media. Contact Velma Bittick, velee@acsalaska.net or 252-7579.
- Hospitality Committee:** Help at the registration desk for pro- gram meetings or certain special events, greeting, taking memberships etc, room set up, refreshments, clean up. Contact Juanita Owens, samowens0969@yahoo.com or (318) 557 -9876.
- Co-Videographer/photographer for programs and work- shops:** Contact Linda Dunn, lindadunn78@gmail.com or 283- 7857.
- Tech committee:** Power Point programs and mike set up for pro- grams, occasional workshops. Contact Don St. John, 398- 4474.
- Sea Ag Fertilizer Fundraiser:** Order & Pick-up help, March- May delivery day. Contact Don St. John, 398-4474.
- Occasional guest speaker lodging:** Great opportunity for more expert information. Contact Marion, 283-4632.
- Summer Garden Tours committee.** Coordinate local garden tours during June, July, August. Contact Marion 283- 4632
- June through September:** Weekly summer flower bed mainte- nance and clean up at the Aquaculture Bldg. Light weeding and some planting. The entrance area plantings are a thank you to CIAA for meeting room use throughout the year. We appreciate this valuable contribution. Contact Peggy Morris, 262-8374.
- "Get Ready for Spring" round table event.** Contact Marion mmkn@ptialaska.net
- Face book administrator.** Approve/deny requests to join the club's group page. Contact Marion mmkn@ptialaska.net

Programs & Events

Sept 9, 7pm. Program: The Great Fall Clean Up! What you do in the fall makes for a better spring start up including the tunnels!....or should you just leave everything to serve as mulch over the winter? Round table discussion groups. Committee sign ups!

Sept 19-20. Local Foods Festival sponsored by the Local Foods Group

Oct. 14, 7pm. Program: TBA

Nov 1, 10am-3pm HEA Energy Fair info booth.

Nov. 11, 7pm. Program: TBA

Dec. 9, 7pm. Program TBA

Former Alaskan visiting from RI, Nancy Brown enjoyed the giant Dahlias at Dragon Fly Gallery. There are many dozens of them plus lots of other beautiful blossoms in the Gallery yard.

